



OUTWOOD *NEWS*

**OUTWOOD
NEWS**

COPY DATE

**APRIL
2024**

**Friday
15th MARCH**

*Late copy cannot
be inserted without
prior agreement.*

Outwood Matters
is the village email
distribution list.
If you would like
to be included on
this please email
outwoodsmatters
@gmail.com

Please submit
copy to:
anne.morle
@outwood.org



MARCH 2024

- ✓ Mot's
- ✓ Servicing
- ✓ Cambelts
- ✓ Diagnostics
- ✓ Clutches
- ✓ Batteries
- ✓ Tyres
- ✓ Exhausts
- ✓ Brakes
- ✓ Air con. etc.



A friendly, trustworthy, family run business which has been built upon recommendation since 1966.

For more information...
Please check out our website or give us a call.



All work is carried out in-house

Good Garage Scheme Member Since 2007



01342 842132

www.windmill-garage.co.uk

Outwood Common, Outwood, Surrey, RH1 5PW



Supporting you and your family

Whatever your circumstances, Morr & Co provide a highly professional service and help you to make clear plans and balanced decisions.

Our expert team can assist with:

- Family Law
- Residential Property
- Employment Law
- Wills, Trusts and Powers of Attorney
- Personal Injury
- Probate and Estate Administration
- Dispute Resolution
- Contested Trusts and Probate
- Business Law

Contact our team today:

☎ **01883 779312**

@ **info@morrlaw.com**

Offices across Surrey, Hampshire & South West London

**MORR
& CO**

The law firm for business and life

LLOYD HALL

On Friday the 19th April,
as a fund raiser for the Lloyd Hall, Shoestring will do a musical show

"A Song for Outwood"

which will be a small cast of members and helpers,
a light supper in the interval, a bar for refreshment,
and plenty of singing by everyone, including the audience.

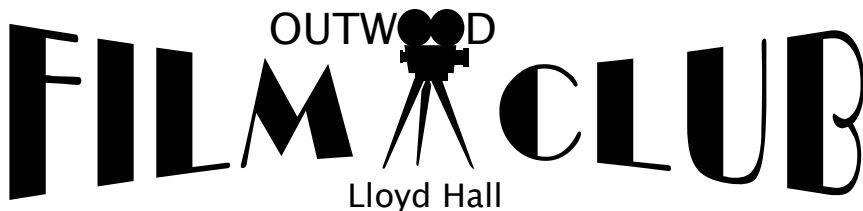
The tickets will cost £20, with opportunity to donate more!

The village organisations are each invited to form their own small "choir"
and perform something together,
and individuals can let me know if they would like to become temporary
Shoestring members for the evening.

Please let me know early if you would like to be involved in this, either alone
or as a group. Organisation is everything!

Sandra Crittall
sandracrittall@gmail.com

01342 843661



The next Film Club will be on the 26th March.

The last Tuesday of the month.

7.30 for 8.00pm

Drinks, Popcorn and Ice Cream available.

Please check the Advert inside the Hall to the right of the
front door, as to the Film chosen. Also members will have
an E mail a few days before the showing.

Why not join the club

£7.50per year.

Entrance donation Members £3, Non Members £5

CHURCH NEWS

CHARLES' CHATTERINGS



Easter is early this year, and when you read this article we will already have flipped some pancakes and some of us will have been to church for Ash Wednesday, the day that marks the beginning of Lent in the Christian Calendar.

"Lent" is a strange term in itself for this time of year. It simply comes from the old English word meaning "lengthen", because as I am sure we are all aware the days are getting longer, as we move into spring.

During Lent, many people decide to give something up that they love. When I was talking to the children at assembly about giving up chocolate or sweets for 40 days they weren't very impressed with the idea. But they did seem to think that taking something up was a better idea in making an effort to be extra nice to family and friends, for example.

The date of Easter changes every year, this is because it is based on when the full moon appears and this year the full moon appears on March 25th and Easter Sunday is the Sunday following (March 31st).

Did you know the earliest that Easter can be is March 22nd, which occurred in 1818 and won't occur again until 2285! As for the latest Easter can be, that is April 25th which occurred in 1943 and will happen again in 2038. And if you are really interested in trivial facts, 2024 being a leap year, Easter won't occur on April 25th in a leap year until 3784! And again, in a leap year for it to fall on April 24th will not be until 4292!

Having come through the short days, dark nights and cold of winter, it is so refreshing to see the new life that comes with spring. The snowdrops have suddenly started to appear and the daffodils are pushing their way through the soil. I spotted my first baby lambs scampering around a field just the other day. What a joy spring is.

The poet Wordsworth was caught up with the beauty of spring when he wrote:

I wandered lonely as a cloud
That floats on high o'er vales and hills,
When all at once I saw a crowd,
A host, of golden daffodils;
Beside the lake, beneath the trees,
Fluttering and dancing in the breeze.

CHURCH NEWS

When I lived in Cornwall, I often passed field upon field that were used to commercially grow daffodils for markets up and down the country, what a sight just to see those yellows covering the landscape, it fills one with joy just to see such beauty.

There is much happening in all our churches at this time of year. Don't forget Mothering Sunday on the 10th of March. We have a special choral service on Sunday 24th March at 4pm, when you can come and enjoy the singing of our Benefice Choir. And Easter Sunday begins early (*especially as we lose an hours sleep with the clocks having "sprung forward" an hour*) with a short service on Outwood Common at 7am. For details of all our services, to which everybody is most welcome, please refer to the list on page 19.

With love and prayers

Charles

Rev'd Charles Sargent
Associate Priest
Windmill United Benefice
Smallfield Church Hall
Redehall Road
Smallfield
Horley RH6 9QL

windmillchurches3@gmail.com



THE ROYAL BRITISH LEGION
OUTWOOD BRANCH

ST. GEORGE'S DAY LUNCH

TUESDAY 23rd APRIL

12.30 for 1.00pm

THE BELL OUTWOOD

2-course lunch + coffee

£25.00



TO BOOK YOUR PLACE

Contact

Jo Barber

07967 157402

or e-mail:

jombarber@hotmail.com

ALL VERY WELCOME

FEBRUARY 2024

This February we have been celebrating 103 years of Outwood WI! We are very proud to be continuing a tradition set so long ago that we should meet regularly to develop friendship and support within our community, whilst developing our own education and understanding of the world.



Our president, Caroline, lights up Lloyd Hall with our 103rd birthday cake, watched by our visiting speaker Susan Purcell



Our visiting speaker was Susan Purcell, an editor and wordsmith who has spent her working life investigating the origins of the English language. And what an amazingly diverse language we speak: original Old English was influenced by words from Latin, ancient Greek, German, as well as French and Viking invaders. Susan took us on a historical journey from the first proper English dictionary published in 1604, which contained only two and a half thousand words and was advertised for “the benefit and help of ladies and other unskilful persons”. Suffice to say that our members were unimpressed by this! By the first half of the eighteenth century, the English language had been greatly enhanced by writers such as Shakespeare, Milton and Pope and the time was right for someone to take on the mammoth task of producing an accurate and comprehensive dictionary which would not only explain words, but also give their derivations. This task fell to Samuel Johnson and in 1755 (after seven years of hard labour) he published his now legendary work in two volumes, including 40,000 words. Needless to say, our more modern equivalents – in 1989 the Oxford English Dictionary was published in TWENTY volumes- would not have been possible without the dedication and enthusiasm of the earlier lexicographers.

By the end of Susan’s presentation we were all keen to share personal opinions on favourite words, accompanied of course by tea and birthday cake.

Spring is approaching, heralded by our latest post box topper on Millers Lane with hungry rabbits, daffodils and bluebells.

Our group have several planned outings to look forward to, including a lunch at a garden centre and a visit to the Priests House at West Hoathly.



Our next meeting is on Tuesday 5th March when David Chave will be talking to us about *Murderous Women*: let’s hope he doesn’t give our ladies any ideas!

Elizabeth Dyke

CAGNE

**Communities Against Gatwick
Noise and Emissions
The umbrella aviation community and
environment group for Sussex, Surrey and Kent
Tel 07831 632537**

Residents face the biggest threat ever from Gatwick Airport, and it's not just about a new runway.

Gatwick Airport, alongside progressing planning permission for a new runway, are conducting the 'modernisation of airspace' (Future Airspace Strategy Implementation South – Government policy) which is seeking to redesign the airspace above residents' homes.

Those not currently overflowed need to be concerned, as do those currently under flight paths, as the redesigning is taking place now. The aviation industry bodies (ACOG and NATS) have identified the areas south of Gatwick to take the full burden of increased flight paths and volume of planes.

Local authorities and those currently overflowed who have formed noise groups, have been involved in the complex Gatwick presentations. With poor mapping to provide feedback on, it has been near impossible to provide defence for the areas earmarked for the new flight paths. There has been no clear indication of who will suffer the burden of Gatwick's desire for greater capacity from the main runway (not to mention a possible second runway). According to the CEO of the Civil Aviation Authority, 'this is by design'.

Members of the public will not be consulted until the end of stage 3 of the consultation process (of 7 stages of CAP1616), by which time much will have already been decided through the previous stages, so it will be a fait accompli.

Whether you seek to share the burden by having planes fly over new communities, or you don't want aircraft over your house, or you wish to see fewer flights in order to save the planet, what is clear is that those in power (Gatwick Airport) do not want residents to know that this is taking place now on aviation computer screens, with little, if any, consideration of how it will impact your wellbeing and house value.

We encourage you to join the CAGNE mailing list to keep informed of developments and email your Member of Parliament to ask questions now.

NATURE WATCH

I Watched a Blackbird

By Thomas Hardy

*I watched a blackbird on a budding sycamore
One Easter Day, when sap was stirring twigs to the core;
I saw his tongue and crocus coloured bill
Parting and closing as he turned his trill;
Then he flew down, seized on a stem of hay,
And upped to where his building scheme was underway,
As if so sure a nest was never shaped on spray.*

This beautiful poem captures the essence of spring, a new start, new opportunities and new life. The rain and mild temperatures of the first six weeks of the year have certainly resulted in signs of an early spring, with many trees and shrubs flowering, budding and some producing fresh leaves, such as an elder spotted in the first week of February near Hookhouse Farm, or, a week later, a blackthorn in full white bloom. On the common at the top end of Millers Lane, garden escapes were putting on a show with primroses, mauve crocus, and snowdrops. The same picture was repeated in gardens where roses have also been early into leaf, and flowers, such as daffodils, primroses, crocus, hellebores, snowdrops and spurges have lit-up the darker days.

One spurge that is often overlooked is the Stinking Spurge (*Euphorbia foetidus*), which grows to about 30cms in height. It has flowers that are light green in colour with purple edges and bunched together in small trusses. Despite the name, whilst the smell is dank, I don't find it offensive. Some shrubs and trees have also flowered sooner than expected including cherries, yellow flowered kerria, winter honeysuckle, camellias in a range of colours, pink and white viburnums and the yellow, sweet smelling wych hazel. Birds are also increasingly pairing up and selecting nest sites, like the blue tits, great tits and sparrows that have been busily checking out various nest boxes. Meanwhile, squirrels are scampering around in the tree tops seeking out mates and repairing old dreys or building new ones ready for the next generation. Nature is on the move.



Comfrey, which started flowering in the third week of February, is a plant that is not often seen these days but was a stalwart of old cottage gardens. There are over fifty species and many other hybrids. Comfrey is a member of the borage family (*Symphytum*) and was grown for its medicinal properties as the plant contains high levels of metals such as phosphorus and a number of phytochemicals. Skin applications of leaves were believed to heal wounds and knit broken bones together. It was also used as forage for pigs and goats.

Recently, whilst taking Tess for a walk in the woods at the top of Hornecourt Hill, I saw yet another white squirrel, which does seem to support the view that this part of the country is a stronghold for this variant of the common grey. It was gone in a flash as it took the usual get-free-card and shot up the back of a large oak. A few days earlier I met up with a charming chap, James Sexton, who introduced himself as a keen twitcher – the binoculars around his neck rather gave the game away - and he mentioned that he had seen a peregrine falcon in the area. The only time I've seen them is along the cliffs of the Avon estuary in south Devon. Travelling down to Smallfield I spotted a dead badger on the bend of Rookery Hill, almost certainly as the result of a collision with a road vehicle.

Mike F Johnson

Amie Electro

Amie Electro the friendly and professional Electrician you can trust.
Residential and commercial, single phase and three phase.
Complete and partial rewires.



Fusebox replacement and upgrades.
Inspection, testing, certification, maintenance and more!

Susanne Heldwein trading as
Amie Electro. Thorough,
methodical and solution
oriented work attitude. Active, positive,

straightforward and ethical approach. All works
carried out personally.. taking good care of
your property. Offering the full range of
domestic and commercial electrical services.

Qualified with distinction as electrical installer
(Munich, Bavaria, West Germany 1990). Established
in the UK in 2011. City & Guilds Level 3 Diploma
in Electrical Installations.

Part P registered.

*Domestic &
Commercial*

*Part P
registered*

01342 888654 / 07951 179146

mail@amie-electro.co.uk

*Find the reviews
@ www.amie-electro.co.uk*

Single Phase & Three Phase

*Amie
Electro*



MR Computing Ltd



The computer repair shop that comes
to you at an agreed time/day, no
waiting around and no need to
transport your IT equipment.

- NO FIX NO FEE
- Visiting computer/IT support for home & office
- New computer supply & setup to be familiar
 - Reliable wireless range improvement
- Computer speed up, repairs, data recovery
 - Remote support



Call: 01342 349109 / 0800 6129534

Email: office@mrcomputing.net

www.mrcomputing.net

Reviews: fb.com/mrcomputingltd/reviews

Outside In Locksmiths

Available 24 Hours

0800 772 39 72

Domestic, Commercial, Landlord.

Lock Outs, New Locks,
Lock Repairs.

Wooden, Upvc, Composite
and Aluminium doors locks
repaired.

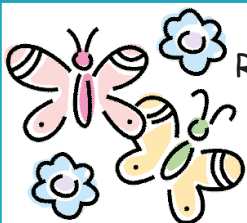
Fully Insured.

Free Quotes.



Checkatrade

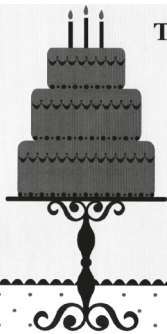
outsideinlocksmiths.co.uk



BABYSITTING

Reliable teenage
girl from
Outwood
available for
babysitting.

Please contact Aine Martin
07462 275707



The Pink Cake Company

tiered wedding cakes
cupcake towers
cakes with edible images
feature cakes
afternoon tea cakes



lynne.messenger@hotmail.co.uk
07780 705961



Home or Office
Desktop – Laptop – Network
Specialists

We Come to You!

On-site or pickup and return service

Fixed price repairs - 1000+ Clients
30 yrs+ experience - No Fix No Fee

Call Steve or Caroline

01342 834267

07771 666759

enquiries@sensiblepc solutions.co.uk

www.SensiblepcSolutions.co.uk

**KEEPING OUTWOOD
BUG FREE FOR 25 YEARS**

OUTWOOD NEWS

This space is just £160 p.a.
- only £16 per edition!

For more information and to check availability
please contact

John Mankelow:

01342 842764

or

Anne Morle:

01342 843336

anne.morle@outwood.org

OUTWOOD HISTORY GROUP

Does anyone know about the Lloyd Family, any stories about them personally? How did they take part in village life, or maybe prop up the bar in the Bell?

I would like to write something about the family that played such a big part in Outwood's history.

The Outwood History Group meets on the first Tuesday of each month.

If you can help us, please ring David on 01342 843661

Claire Coutinho MP

*MEMBER OF PARLIAMENT
FOR EAST SURREY*



Since I was elected, I've held regular surgeries with local residents to talk about the issues that matter to them.



I've also been holding regular remote surgeries by telephone, so if you need any help or want to raise an issue of importance to you, please don't hesitate to email or call me to set up a meeting.

Claire

0207 219 5972

clairecoutho.com

claire.coutho.mp
@parliament.uk

claire4eastsurrey

@clairecoutho

Promoted by Text Heli, on behalf of
Claire Coutinho, MP at 6 Godstone
Road, Lingfield RH7 6SW

D C Read Builders & Landscapers

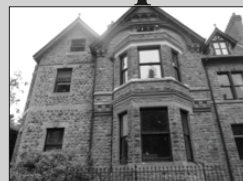


01342 843023



'Quality Workmanship'

info@dcreadbuilders.vpweb.co.uk
www.dcreadbuilders.co.uk



07706 467803



Connecting the
Arts and Crafts
community

UKCraftFairs.com

PAT CARTER

For all your electrical work

Tel: 01342 843883

Mobile: 07711 478890



Burstow Group of St Catherine's Hospice

AGM

Monday 4th March @ 6pm
Church Room, Wasp Green Lane
All Welcome

CLAIRE COUTINHO MP

Did you know that nestled down a lane on the outskirts of Lingfield, we have one of the best school and colleges for young people with epilepsy and severe learning difficulties in the country? St Piers School & College is a beacon of educational excellence, run by the brilliant Young Epilepsy charity, which has been in Lingfield for over a century. I care deeply about giving children with special educational needs and disabilities the very best start in life, and on a recent visit I was bowled over by all they have on site to help their students develop the skills they need to grow and make their way in the world. From a coffee hut to help pupils learn how to handle cash and serve customers, to woodworking workshops to create the most beautiful ornaments and birdboxes.

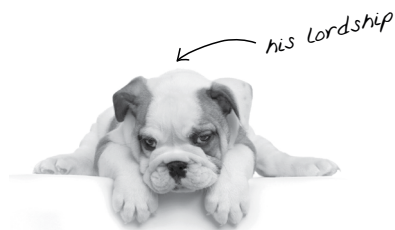
I sat down with pupils from Year 7 to Sixth Form at Oxted School to talk about my unconventional route into politics, the policymaking process, and issues ranging from climate change to the Monarchy. If there's one thing I've learnt from visiting schools across East Surrey it's that students always ask the best questions.

At the end of January over 150 pharmacists across the Surrey Heartlands NHS area signed up to the Government's new Pharmacy First scheme, so that they can treat more health conditions without patients needing to see their GP. This will help to free up ten million GP appointments across the country each year. Pharmacists will be able to use more of their medical skills and training to help with conditions including sinusitis, sore throat, earache, infected insect bites, impetigo, shingles, and some UTIs in women.

In my Ministerial role I've been working on something that I know many residents get frustrated by – petrol prices. Many have called for a 'Pumpwatch' scheme to increase transparency into the market and stop rip-off fuel prices. We are listening and we're changing the law to give the regulator new powers to force fuel retailers to provide live price information – introducing competition in the market and making it easier for drivers to find the cheapest price at the pump.

If you have an issue you'd like me to help with, please contact me on
claire.coutinho.mp@parliament.uk or call 0207 219 5972.

Treating Your Pets Like Royalty



Crown Vet Clinic

1 The High Street
Nutfield, Redhill,
Surrey RH1 4HH
crownvets.com
t: 01737 822250

Opening times:
Monday - Friday
8.30am - 6.30pm
Saturday
9am - 11.30am

Miss Nicola Williams Consultation by
Mr Michael Taylor appointment

ANTIQUE FURNITURE RESTORATION

ALL ASPECTS OF
FURNITURE REPAIRS AND
POLISHING UNDERTAKEN

INCLUDING MODERN
FURNITURE

30 YEARS' EXPERIENCE

FREE ADVICE AND
ESTIMATES GIVEN - CALL

STEVE PEACOCK
01883 743879

Home Of Reflexology

Based in Outwood Village



Do you want to find an oasis of relaxation and calm in our picturesque village?

Are you looking for a way to unwind, improve your mood and de-stress in a peaceful environment, just minutes from your home?

Restore that feeling of well being, improve your sleep and take time for yourself

Reflexology is suitable for everyone, and appointments are available throughout the week

Vouchers are available for that perfect gift!

To book or for more information contact Catherine

tel: 07741 300 720

email: catherine@surreyreflexology.com





CHARTERED DESIGNERS PROJECT MANAGERS

Architecture ❖ Interior Design
Engineering ❖ Surveying
Town Planning ❖ Project Management

**For all aspects of building
design and construction**

Contact Bill Morle FCSD MFPWS

01342 843336

email: bill@a-bdesigns.co.uk



Cheeld Wheeler & Co

CHARTERED CERTIFIED ACCOUNTANTS

Taxation and Accountancy services for:

- Individuals
- Partnerships
- Charities
- Limited Companies

Call: 01737 224891

www.cheeldwheelerandco.co.uk

Helgaz Flowers

Modern & Traditional Floristry

Flowers to suit all budgets

**Weddings, Funerals
and all other occasions**

01342 843777

helgazflowers@gmail.com

www.helgazflowers.co.uk

Please like us on 

1b Wheelers Lane, Smallfield, Surrey RH6 9PT



OUTWOOD PARISH COUNCIL

The Annual Village Meeting will be held on 15th April in Lloyd Hall at 7pm.

There will be a speaker on Neighbourhood Planning and the Parish Council will be seeking a view on whether this would be appropriate for Outwood. It will require volunteers to help on a committee.

End Stigma Surrey is the local campaign and programme to raise awareness and reduce negative attitudes and stigma around mental health. To help to target this programme to where it is most needed, Surrey County Council have developed a survey. **They would like to hear from people with experience of mental health issues** (either direct or indirect e.g., as a carer, family member, friend), **about any stigma or discrimination they have experienced, or may experience** via this online survey. Surrey Mental Health Stigma Survey - Surrey County Council - Citizen Space (surreysays.co.uk) The survey takes about 10 minutes.

Your survey responses are anonymous and not identifiable at a personal level. Your responses are anonymous and strictly confidential and will only be shared amongst the direct project team for statistical analysis. Surrey County Council will gather all findings anonymously to share and present in a summary report. This report will be published and made available in March on www.endstigasurrey.org.uk

From the organisers of the London to Brighton Challenge:

The annual London to Brighton Challenge on Saturday 25th and Sunday 26th May 2024. This will be the 6th year of the event and will follow a similar format to 2023. The event route is a linear 100km from London to Brighton. The event starts at the Old Deer Park in Richmond and finishes in at Brighton Racecourse with participants walking up to 100km on public footpaths, rights of way, roads, and pavements. Participants can choose to do shorter routes which include either the 1st half or 2nd half (The Sussex Marathon) as well as $\frac{3}{4}$ quarter, 1st quarter, 2nd quarter and a new 25K Brighton Loop Challenge.

I have informed the county and district councils as well as the key landowners along the route. Further to this I wanted to contact stakeholders on a more local level. If you feel there are other people in your parish that I should inform, please can you let me know their details.

As per previous years with our Ultra Challenge Series event format, there are no licensable activities taking place, nor will we be requiring any road closures. We do put signage out (pink A5 arrows); however, this is participant facing at head height to help ensure that no one gets lost. Our route team follow the last walker around the route and takes down all signage put out as well as litter associated with the event.

MEMBERS OF THE PUBLIC ARE INVITED TO ATTEND ALL OUR MEETINGS

Wednesday 6th March 2024, 7.30pm in the Church Room

For more detailed meeting reports and any current planning applications please visit the website at www.outwood.org and click on Parish Council

CONTACT DETAILS

PARISH COUNCIL MEETINGS

Meetings are held each month except August and December

PARISH COUNCILLORS

Mary Baldock National Trust / Community Matters baldock.mary@googlemail.com 07936 166557
Helena Devlin Highways velma9612@gmail.com 07718 278402
Jane Howard Chair - Footpaths / Bridleways janeweston899@btinternet.com 07753 602656
Anna Malley Planning anna.malley1@gmail.com 07802 581006
Nick de Wiggondene-Shepard Vice Chair - Planning nickdewiggondene@hotmail.co.uk 07788 923495

PARISH CLERK

Rodabe Rudin Email: parish.clerk@outwood.org Tel: 07592 151985
Address: 2 Dirty Lane, Ashurst Wood, West Sussex RH19 3RY

DISTRICT COUNCILLORS

Mick Gillman 01342 893233
Sue Farr 07973 541297
Richard Smith 07702 077673

COUNTY COUNCILLOR

Chris Farr Chris.Farr@surreycc.gov.uk

SURREY COUNTY COUNCIL

General 03456 009009
Pot Holes 0300 200 1003
Verge Cutting 01342 837666

www.surreycc.gov.uk

MEMBER OF PARLIAMENT

Claire Coutinho
Email: claire.coutinho.mp@parliament.uk
House of Commons (Direct Line) 020 7219 7643
Constituency Office Oxted 01883 715782

TANDRIDGE DISTRICT COUNCIL

General 01883 722000

Noise, dangerous structures,
pest control, pollution, flooding,
tree enforcement etc.

Amenity Services 0800 7834843

Abandoned cars, flytipping,
graffiti or vandalism.

Rubbish collection BIFFA 01342 837346

Removal of unwanted vehicle 01883 732998

www.tandridge.gov.uk

GATWICK AIRPORT NOISE

Automated line 01293 311568

Flight tracker on Gatwick Airport website

REDHILL AERODROME NOISELINE

Please copy any response received 01737 888123
using this Noiseline to the Parish Clerk

LLOYD HALL

Booking Enquiries

Telephone 07435 882640

Email: lloydhall.outwood@hotmail.co.uk

Management Committee Secretary

Helena Devlin 07718 278402

Email: lhmc@lloydhall.org

NATIONAL TRUST

Harewoods Estate Office 01342 843225

Ranger - Ashlie Williams

Email: harewoods@nationaltrust.org.uk

www.nationaltrust.org.uk

NEIGHBOURHOOD WATCH

Tandridge Neighbourhood Policing Team

Email: tandridge@surrey.pnn.police.uk

Mark Osland Email: outwoodnw@gmail.com

POLICE

Emergency Attendance 999

Report non-urgent incidents 101

Crime Prevention Advice

Mark Howells

Email: mark.howells@surrey.pnn.police.uk

PS Brooker is the Southern Sergeant

Email: Joshua.Brooker@surrey.pnn.police.uk

The PC's for our area are Lee Newman and
Rowan Futter

Email: Lee.Newman@surrey.pnn.police.uk

Email: Rowan.Futter@surrey.pnn.police.uk

USEFUL NUMBERS:

PEST CONTROL (Rats, wasps etc.)

Balcombe Pest Control 01444 811916

BIFFA Special Collections 01883 712333
(Option 2)

Fridges, Freezers, Furniture etc.

OUTWOOD'S PUBLIC TRANSPORT

Note: 315 stops (and drops off)
anywhere in the village when hailed.
For simplicity the times are given for
Millers Lane.

**Please make timing adjustments
for stopping elsewhere.**

315 Cruiser Service

Times to and from Redhill, but this bus also
goes to Dormansland via Smallfield

Monday to Friday only

Leaves Millers Lane	07.48
	10.25
	13.50

The 10.25 and 13.50 buses also go
to East Surrey Hospital via Redhill.
Buses leave the hospital at 12.15
and 17.05 to return to Outwood.

Leaves Redhill Bus Station	09.00
	12.25
	17.15
<i>Fridays only</i>	15.37

On school days there are also
buses from Millers Lane at 07.45

East Surrey Rural Transport ESRTP

Bookings and information: 01883 701270

Website: www.rtp@esrtp.org.uk

*Information provided by
Outwood Parish Council E&OE*

OFFICE OF THE POLICE & CRIME COMMISSIONER FOR SURREY

Lisa Townsend
Police and Crime Commissioner



The public can contact the Office of the Police
and Crime Commissioner in the following ways:

Telephone: 01483 630 200

Email: SurreyPCC@surrey.police.uk

Website: www.surrey-pcc.gov.uk



COMMUNITY SPEEDWATCH

Are you willing to take on
the position of local
co-ordinator.

Please contact
Outwood Parish Council
for more information

CHURCH CALENDAR FOR FEBRUARY

Sunday 3rd March

8.00am	BCP Holy Communion at Horne Church
9.30am	Holy Communion at Burstow Church
10.00am	Family Service at Horne Church
11.00am	Holy Communion at Outwood Church

Sunday 10th March - Mothering Sunday

9.30am	All age service at Burstow Church
10.00am	Holy Communion at Horne Church
11.00am	Holy Communion at Outwood Church

NB There is NO Café Church this week as it has moved to Good Friday

Sunday 17th March

9.30am	Holy Communion at Burstow Church
10.00am	Holy Communion at Horne Church
11.00am	Holy Communion at Outwood Church

Sunday 24th March - Palm Sunday

9.30am	Joint Benefice Service at Burstow Church
4.00pm	Choral Evensong at Horne Church

Thursday 28th March - Maundy Thursday

7.00pm	Maundy Thursday Service / Meal / and Watch** in Smallfield Church Hall
--------	---

Friday 29th March - Good Friday

2.00pm	Service for Good Friday at Outwood Church
3.00pm	Café Church in Smallfield Church Hall

Sunday 31st March - Easter Day

7.00am	Dawn Service on Outwood Common
9.30am	Holy Communion at Burstow Church
10.00am	Holy Communion at Horne Church
11.00am	Holy Communion at Outwood Church

** The meal on Maundy Thursday. The meal is free but for catering purposes it is useful to know numbers.

Please email: windmillchurches3@gmail.com if you wish to attend.

DIARY OF EVENTS

MARCH

Monday 4th	RETIREMENT OF BRYAN BETTISON 6.30pm - The Bell
Monday 4th	ST CATHERINE'S HOSPICE - AGM 6.00pm - Church Room
Tuesday 5th	WI MEETING - "Murderous Women" 2.30pm - Lloyd Hall
Wednesday 6th	PARISH COUNCIL MEETING 7.30pm - Church Room
Tuesday 26th	FILM CLUB 7.30 for 8.00pm - Lloyd Hall

APRIL

Tuesday 2nd	WI MEETING - "History of Ballroom Dancing" 2.30pm - Lloyd Hall
Wednesday 3rd	PARISH COUNCIL MEETING 7.30pm - Church Room
Monday 15th	OPC - ANNUAL VILLAGE MEETING 7.00pm - Lloyd Hall
Friday 19th	A SONG FOR OUTWOOD
Tuesday 23rd	ORBL ST GEORGE'S DAY LUNCH 12.30 for 1.00pm - The Bell (See page 6)
Tuesday 30th	FILM CLUB 7.30 for 8.00pm - Lloyd Hall

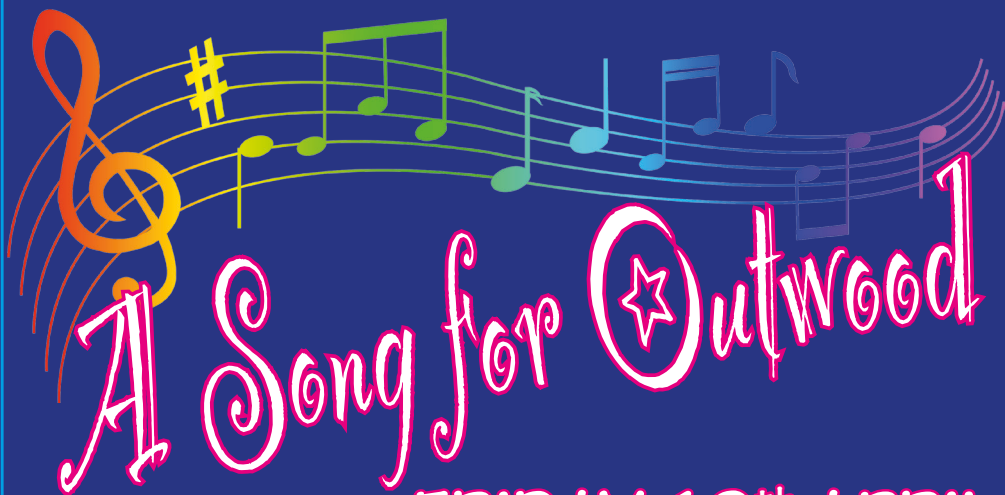
OUTWOOD VILLAGE WEBSITE www.outwood.org

The website Diary page, maintained by Outwood News, lists all village events (*of which we are aware*) taking place up to a year in advance.

Why not take a look to avoid a clash of dates!

Shoestring
PRODUCTIONS

FUNDRAISING FOR
LLOYD HALL



FRIDAY 19th APRIL

Doors open 7.00pm for 7.30pm

Lloyd Hall, Brickfield Road, Outwood RH1 5QX

Tickets: £20

including a light supper during the interval

email: shoestringp@gmail.com

phone: 07703 342931

*An evening of musical entertainment by village groups
and individuals with sing-alongs by the audience,
singing is good for the soul!*

RAFFLE + PAY BAR

Opportunity to donate more to Lloyd Hall

GARDEN MAINTENANCE

We are a friendly and reliable family run business, specialising in complete all year round garden maintenance.

- GRASS CUTTING
- WEEDING
- HEDGE CUTTING AND SHAPING
- SEASONAL TIDY-UPS
- JUNGLE CLEARANCE
- REGULAR VISITS
- MAINTENANCE PLANS
- FULLY INSURED

FROM PRIVATE
INDIVIDUALS TO
MANAGEMENT
COMPANIES



TRUSTED
LOCAL BUSINESSES ✓

MOWING MACHINE GARDENERS

For a no-obligation free estimate please call

01342 529365 or 07771 922281

www.themowingmachine.co.uk



local babysitter available !

- lives in outwood
- fifteen years old
- babysitting experience
- happy to cook + entertain kids

contact me - olivia
07521 460413

miss.oliviam@icloud.com

WANT TO ADVERTISE IN OUTWOOD NEWS?

This space is just £60 p.a.
- only £6 per edition!

contact

John Mankelow: **01342 842764**

or

Anne Morle: **01342 843336**

01342 843883
07711 478890



Fusilier
Electrical Limited

PART P CERTIFIED
NICEIC APPROVED

Contact Pat or Adam Carter
email:cartpatri@aol.com

PAUL RICHARDS UPHOLSTERY

All aspects of Upholstery
and Re-Upholstery undertaken

Fabrics and Foams Available

Quality you CAN Afford

Traditional Workmanship by a Skilled Craftsman



All Upholstery Carried Out In Our Own Workshops

20 Years Experience

*From Chairs to Chaise, Seats to Settees
Portfolio Available*

Free Estimates and Advice

Trindles Farm, Plough Road, Smallfield, RH6 9JN

Phone/Fax: 01342 619277

Mobile: 07949 510877

Paul.Richards.upholstery@gmail.com

CHRIS ANDREWS GARDEN MAINTENANCE

CITY & GUILDS HORTICULTURE

GRASS CUTTING,

HEDGE CUTTING,

TREE & SHRUB PRUNING,

BEDS & BORDERS WEEDED

& MAINTAINED, PLANTING,

GENERAL HANDYMAN SERVICES

ESTABLISHED 20 YEARS

REFERENCES AND PHOTOS AVAILABLE

CALL CHRIS

TEL. 01342 841583

MOB. 07810 748852

4 WHITEWOOD COTTAGES, WHITEWOOD LANE,
HORNE, RH9 8JR

L.A. ROWE

PLUMBING & HEATING

Tel: 01342 844 600

Mob: 07801 531 423

Working locally for 17 years

Bathrooms • Showers

Kitchens • Boilers

Central Heating

Gas Installation

Guttering & Leadwork



reg. number
028229W



164781



Gayton Veterinary Group

www.gayton.co.uk



We are open from Monday to Saturday
by appointment.

Monday to Friday | 9am - 7pm

Saturday | 9am - 4pm

Gayton House,
40 Hatchlands Road,
Redhill, Surrey RH1 6AT

01737 761475

7 South Parade,
Horley Row,
Horley, Surrey RH6 8BH

01293 771560



With winter slowly passing, thoughts at the club are turning to preparing for the new season.

Ground maintenance was completed in the Autumn and despite the wet winter, we have managed to carry out essential pitch and outfield preparations. In late early April we will throw open the shutters and spring clean the pavilion.

Our players will soon begin their own preparations with the start of winter nets at Hawthorn School for five weeks from 24th February.

The net sessions are open to all. If you fancy starting cricket for the first time, or want to return to the game after a layoff please come along. Age and experience are no barrier. We have teams to suit every age and ability.

You can make enquiries by email; **info@outwoodcricket.club**

We look forward to welcoming you to the 'The 'Wood'

OUTWOOD NEWS

This space is just £160 p.a.
- only £16 per edition!

For more information and to check availability
please contact

John Mankelow:

01342 842764

or

Anne Morle:

01342 843336

anne.morle@outwood.org

OUTWOOD HORTICULTURAL SOCIETY

Outwood Horticultural Society aims to enrich members' lives through plants and gardening to make our community a greener and more beautiful place.

Membership is open to all and new members are very welcome.

Please contact us at outwoodhortsoc@gmail.com if you are interested in joining.

If you are sowing seeds, we'd be very grateful if you could set aside a few seedlings for our plant sale. Tomatoes and courgettes are particularly popular.

DATES FOR YOUR DIARY

Plant Sale	Saturday 4th May 10-12	St John's Churchyard
Early Summer Show	Saturday 22nd June 2024	St John's Church
Late Summer Show	Saturday 31st August 2024	Lloyd Hall

Floral display theme Early Summer Show

Midsummer night's dream

Photographic classes for Late Summer Show

Sunrise or sunset

Emotion

Flora and fauna

Children's Class

The great outdoors

RETIREMENT

OUTWOOD'S FAVOURITE POSTMAN, BRYAN BETTISON

Join us at The Bell on **Monday 4th March** from 6.30pm
to say farewell to Bryan and present him with our retirement gift.

If you have not yet contributed but would like to then
details of how to donate are below.

Outwood4Ukraine account is being used temporarily:

Outwood4Ukraine

53-50-39

55428835

Cash can be left in an envelope addressed to Bryan at Rookery Hill,
Rookery Hill RH1 5QZ and the cash will be deposited in the account
so that a single cheque can be given to Bryan.

Cards that look like greetings cards will be left unopened and handed direct to
Bryan on 4th March.

Any questions, please contact Michelann Pollard at ukmikia@hotmail.co.uk

ALEX JONES

FUNERAL DIRECTORS

Serving the community since 1996

- OFFERING A CARING AND PERSONAL SERVICE
- 24 HOURS A DAY, 365 DAYS OF THE YEAR
- BEAUTIFUL CHAPELS OF REST
- HOME VISITS AVAILABLE
- MEMORIAL MASONRY
- PRE-PAID FUNERAL PLANS
- AN INDEPENDENT FAMILY OWNED BUSINESS



LINGFIELD

1 East Grinstead
Surrey
RH7 6EP
Tel: 01342 832 534

OXTED

92 Station Road East
Surrey
RH8 0QA
Tel: 01883 730 383

FOREST ROW

1 Ashdown Court
Lewes Road
East Sussex
RH18 5EZ
Tel: 01342 822 399

EDENBRIDGE

70 High Street
Kent
TN8 5AS
Tel: 01732 860 047

Golden Charter 
Smart Planning for Later Life



GC-LIFT 31/361 - 0623

Alex Jones Funeral Directors Limited is an appointed representative of Golden Charter Limited trading as Golden Charter Funeral Plans which is authorised and regulated by the Financial Conduct Authority (FRN:965279).

The
BELL INN



Mothers Day - Sunday 10th March



Easter Day - Sunday 31st March



Always best to book, and that's easy.
Just give us a call on 01342 891 835 or online
via our website at www.belloutwood.co.uk.
Steve, Nick and the team.

Phone: 01342 891835
www.belloutwood.co.uk

LLOYD HALL

The building offers attractive and modern facilities for many types of function.

Wedding Receptions, Banquets, Private Parties and Dinners can be accommodated, as well as regular bookings by local groups and organisations.

The Main Hall can seat over 100 while the two rooms of the Chilvers Suite are suitable for smaller meetings and clubs.

The Kitchen is well-equipped with commercial-quality fittings and fixtures.

All or part of the accommodation is available for hire at an hourly or daily rate.

For more information and to check availability contact the Booking Secretary:

07435 882640

enquiries@lloydhall.org

www.lloydhall.org



Providing Solar PV & EV charging Services

NICEIC & MCS Certified, 'Trading Standards' and 'Which' Approved

Now providing Solar PV design and installation. Electric Vehicle charge point installation.

Electrical Installation, Inspection, Testing and Certification.

All circuit work undertaken. Part P compliant.

Find me on the MCS national database as well as 'Trading Standards' and 'Which Trusted Traders' websites where **reputation** and **reliability** matters.

Contact **Chris Yeldham** in **Outwood**

01342 844642, 07801 519789, chris@yelosshield.co.uk www.yelosshield.co.uk

COFFEE MORNING

**We hold a Coffee Morning at Lloyd Hall
every Wednesday from 11.00 to 12 noon**

Everybody is very welcome to come along and make
some new friends whilst enjoying real coffee
and homemade cake
- only £3 coffee / £2.50 tea
and as much cake as you can manage.

COFFEE MORNING NEEDS VOLUNTEERS

Could you spare 2 hours roughly every other month? Our regular Wednesday Coffee Mornings need a few more volunteers. Alternatively, if you have a friend that you “just don’t see often enough”, it’s a great way to spend a couple hours catching up while giving back to the community.

We have several regulars who really count on Wednesday Morning Coffee as a chance to get out once a week.

It is a great way to invest in our community and get to know some of your neighbours.

Please contact Michelann Pollard at ukmikia@hotmail.co.uk to find out more.

OUTWOOD NEWS COPY DATES

ISSUE

April 2024
May 2024
June 2024

COPY DATE

15th March
19th April
17th May

NOTE: Please submit copy either as finished artwork (a PDF of the correct size) or, if using WORD, in the simplest form. Please avoid using text boxes.

CONTENTS

	<i>Page</i>
CHURCH NEWS	4 & 5
CHURCH SERVICES	19
CONTACT DETAILS	17
DIARY	20
FILM CLUB	3
LLOYD HALL	3
NATURE WATCH	9
ORBL - ST GEORGE'S DAY LUNCH	6
OUTWOOD CRICKET CLUB	24
OUTWOOD HORT. SOC.	25
PARISH COUNCIL	16, 17 & 18
POLICE & CRIME COMMISSIONER	18
POSTMAN'S RETIREMENT	25
PUBLIC TRANSPORT	18
SHOESTRING	3, 21
ST. CATHERINE'S HOSPICE	13
W.I.	7

MULTI-AWARD WINNING GARDEN DESIGNERS, PLANTERS & KEEPERS

We Love Plants Ltd is a renowned, multi-disciplinary design studio founded by Director and Designer Nic Howard with an enviable reputation for creating timeless, beautiful, plant-focused gardens.

The studio is a long established Surrey-based garden design and construction company designing, creating and planting beautiful gardens in Surrey, Sussex and the Home Counties. Our bold, imaginative and impactful approach helps our clients realise their garden and landscape ambitions.

we love
Plants
GARDEN DESIGN
BY NIC HOWARD

01883 744 020 | we-love-plants.co.uk | hello@weloveplants.co



@nichowar



Nic Howard Garden Design



REPUTATION FOR TOP QUALITY ROOFING



NFRC
LEADING ROOFING EXCELLENCE



FOLAN & JOHNSON ROOFING SPECIALISTS

Established in 1988



Checkatrade

Traditional Roofing • Slating • Leadworks • Three Layer Flat Roofing • Horsham Stone • Velux Windows



- Handmade Clay Peg Tiles • 3 Layer Felt Flat Roofing • Traditional & Contemporary Tiling
- Natural Slate • All Aspects of Leadwork to BS1178 • CSCS Compliant

Tel: 01293 784304 • Mob: 07768 695616 • info@folanandjohnson.co.uk • www.folanandjohnson.co.uk

Free estimates
& fully insured



PAChandyman
services

PAC Handyman Services is your local solution to everyday building, maintenance and installation projects within the home and garden.



Tel: 01342 843348 | 07711 939370 | www.pac-handyman.co.uk



If you're compassionate,
caring and kind,
then *#YouCanCare.*

Join an award-winning company doing amazing things to help seniors live well and comfortably at home.

Join our *team*

01737 529793

lindsey.blake@homeinstead.co.uk

homeinstead.co.uk/reigate



"I *love* that I get plenty of time to sit and chat with Linda. We have loads in *common* and lots to talk about."

Lily Graftt, CAREGiver

Inspected and rated

Outstanding

Care Quality Commission

Each Home Instead franchise office is independently owned and operated. Copyright © Home Instead 2021